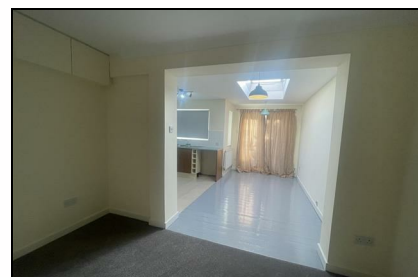


Lackenden Cottages
Littlebourne
CT3 1XD

£1,350 PCM

Finn's
82 Castle Street
Canterbury
CT1 2QD
t: 01227 452111
e: canterbury@finns.co.uk
www.finns.co.uk



A spacious three bedroom semi detached house that has been freshly painted throughout, enjoying beautiful views to the rear over open farmland with accommodation comprising; entrance hall, sitting room, large L shaped dining room and kitchen, bathroom with shower over bath. On the first floor there are three bedrooms, one large double with a built in wardrobe, a further double bedroom and a single bedroom. The property benefits from double glazing throughout and has gas fired central heating. There is a driveway to front allowing off road parking for two vehicles and large gardens to rear mainly laid to lawn backing onto open farmland. One family pet considered.

Available now.

- Semi Detached House in a pleasant rural location
- Freshly painted throughout
- Large L shaped kitchen/diner
- Two double bedrooms and one single
- One pet may be considered
- Available immediately
- Attractive garden with raised deck and open farmland views
- Off road parking for two vehicles
- EPC Band C Deposit £1,555.00
- Canterbury City Council Band C



Energy Efficiency Rating

| | Current | Potential |
|---|----------------------------|-----------|
| Very energy efficient - lower running costs | | |
| (92 plus) A | | |
| (81-91) B | | |
| (69-80) C | 70 | 83 |
| (55-68) D | | |
| (39-54) E | | |
| (21-38) F | | |
| (1-20) G | | |
| Not energy efficient - higher running costs | | |
| England & Wales | EU Directive 2002/91/EC | |



Viewing: By appointment through Finn's, Canterbury
Telephone: 01227 452111

Council Tax: C
Date: These particulars were prepared on: 3rd December 2025

Agent's Note: Wherever appliances or services, fixtures or fittings have been mentioned in these particulars they have not been tested by us. Measurements should not be relied upon. Unless specifically referred to above all fitted carpets, curtains, fixtures and fittings and garden outbuildings and ornaments are excluded from the sale. None of the statements in these particulars are to be relied upon as statements or representatives of fact. Photographs are for guidance only and do not imply items shown are included in the sale - some aspects may have changed since they were taken. No person in the employment of Finn's has authority to give any representation or warranty in relation to this property.

FINN'S CANTERBURY
82 Castle Street
Canterbury
Kent CT1 2QD
Lettings: 01227 452111

FINN'S SANDWICH
2 Market Street
Sandwich
Kent CT13 9DA
Lettings: 01304 614471

FINN'S ST NICHOLAS AT WADE
The Packhouse
Wantsum Way
St Nicholas at Wade
Kent CT7 0NE
01843 848320

